

EXHIBIT TWO (2)
Priority Area Maps
ARIZONA DEPARTMENT OF HEALTH SERVICES
150 N. 18th Avenue, Suite 530
Phoenix, Arizona 85007

REQUEST FOR GRANT APPLICATION
RFGA NO. 2025-003
JUSTICE REINVESTMENT
FISCAL AGENT

Priority Area Maps

January 2023

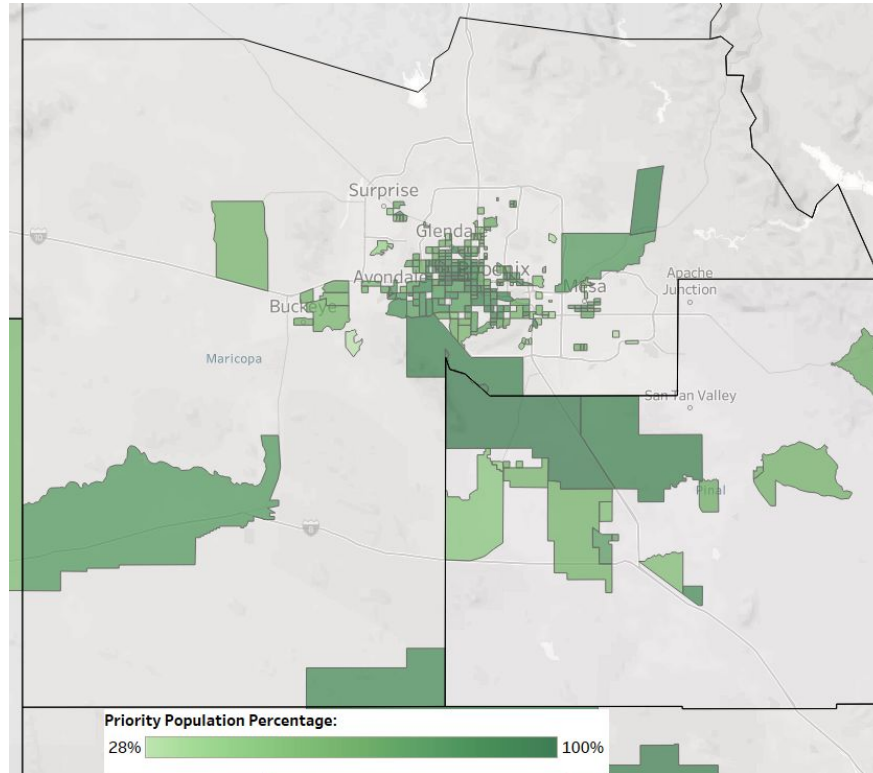
Data Notes

- How were the maps generated?
 1. The racial/ethnic groups that have been disproportionately impacted in terms of incarceration rates was determined. This was completed using Department of Corrections data. The disproportionately impacted communities identified were Black/African American, Hispanic/Latinx, and Native American/Alaska Native.
 2. The census tracts with the highest percentage of these populations were then mapped in color. There are 1,765 census tracts in Arizona, and the roughly top 25% (~434) of census tracts are depicted in these maps. A priority census tract means that it has the highest proportion of Black/African American, Hispanic/Latinx, or Native American/Alaska Native populations.
 3. **The darker the green color, the higher disproportion of incarceration for the three identified races and ethnicities.** The specific variables used from U.S. Census Bureau data are as follows: 1) Not Hispanic or Latino - Black or African American alone, 2) Not Hispanic or Latino - American Indian and Alaska Native alone, 3) Hispanic or Latino - any race. The map can be interpreted as: “XX % of the population is from EITHER Black/African American, Hispanic/Latinx, or Native American/Alaska Native communities.”
- Where did the data come from?
 - Disproportionately impacted race/ethnicities in terms of incarceration rates: Arizona Department of Corrections
 - Census tract geographical data: 2020 U.S. Census Bureau TIGER/Line Shapefiles
 - Race/ethnicity population estimates: ACS Census Bureau 5-Year Estimates (2020) - variable B03002
- Included are images of the entire state, as well as individual counties. Enlarged images of cities that have many smaller census tracts have also been depicted.

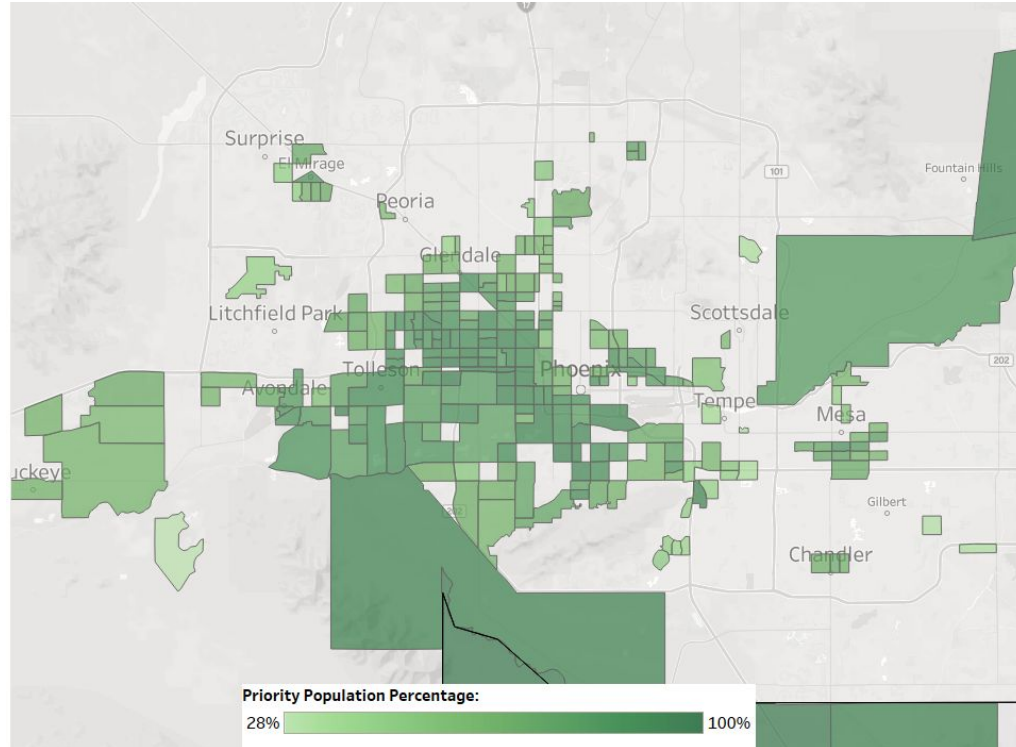
Method: Ranking by Proportion

- The population proportions are not equivalent on a scale of 0-100%. For example, the highest percentage of African Americans in a single census tract in Arizona is 40%, while the highest for the other two groups is 100%.
- Therefore, a different proportion of census tracts can be allocated to each race/ethnicity group based off of their disproportionate incarceration rates from 1985-2019 from the DOC data.
 - This inherently takes into account population size (more likely to be incarcerated by sheer numbers), and underlying systemic reasons why a racial/ethnic group is more likely to become incarcerated.
- The next step is to rank (within each separate race/ethnicity group) their top census tracts from high to low population percentages. All of these are then combined together to create the final list.
 - Some of these census tracts will overlap. These duplicates are removed, and there were 434 unique census tracts.

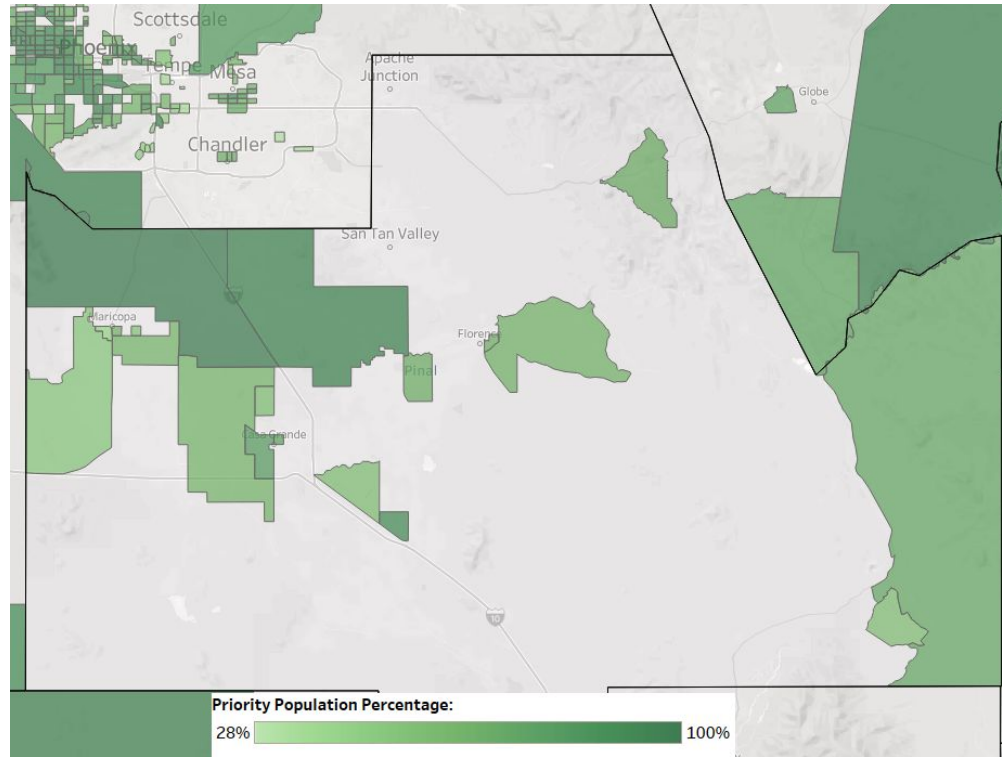
All disproportionately impacted race/ethnicities - Maricopa County



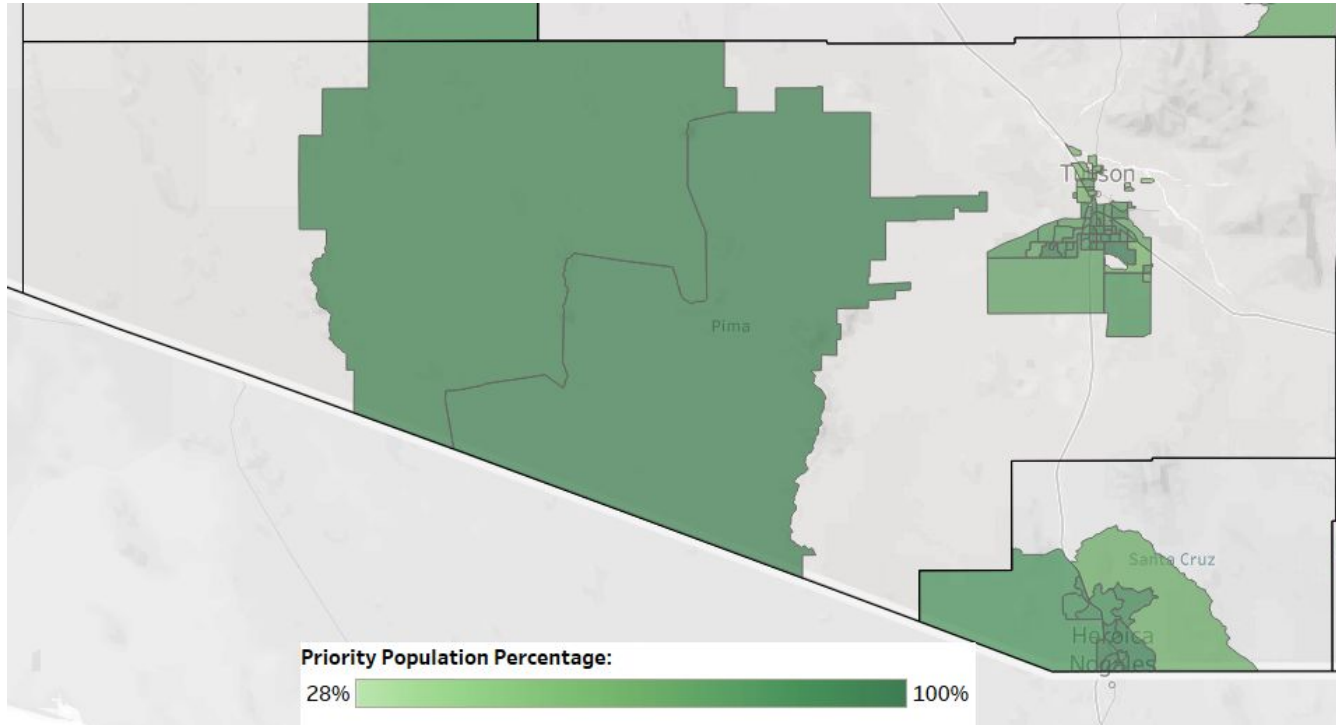
All disproportionately impacted race/ethnicities - Maricopa County (zoomed in Phoenix/surrounding area)



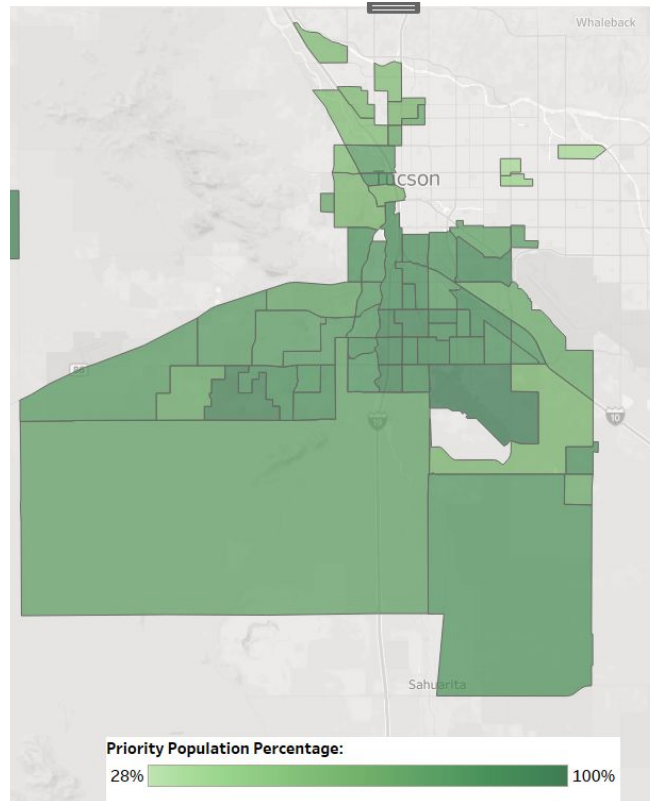
All disproportionately impacted race/ethnicities - Pinal County



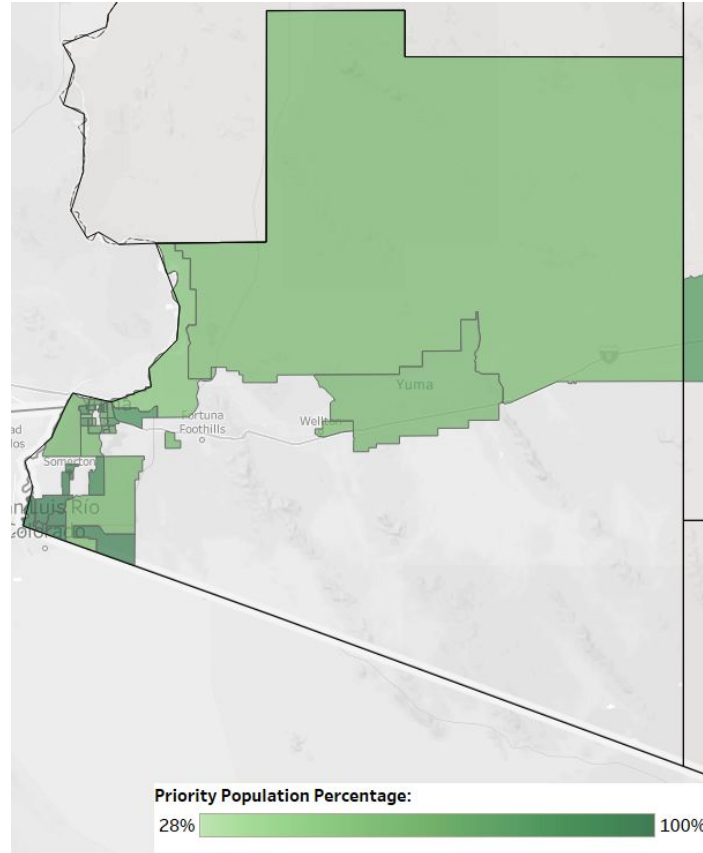
All disproportionately impacted race/ethnicities - Pima County



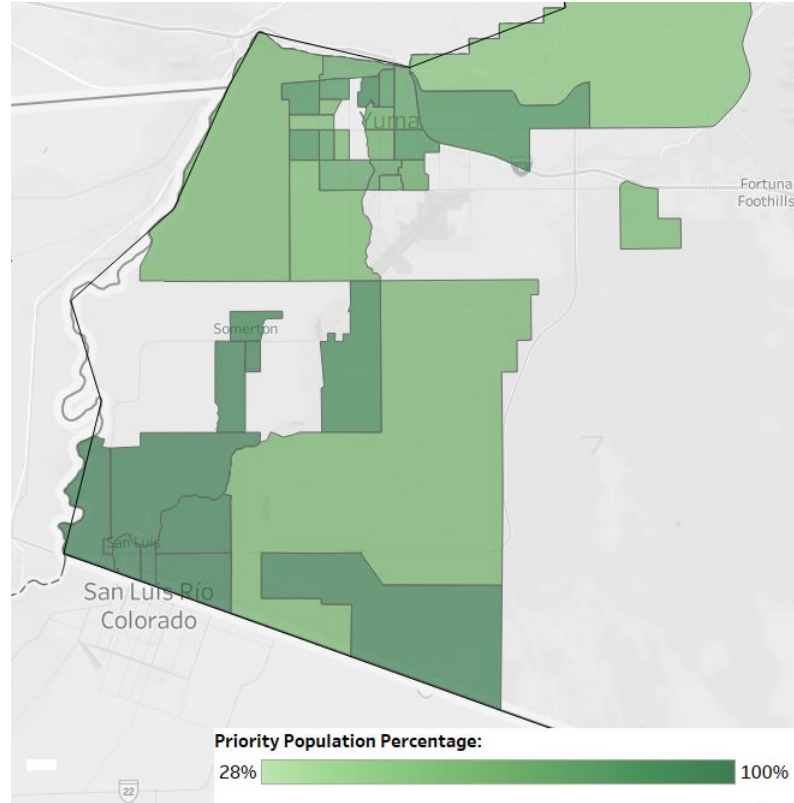
All disproportionately impacted race/ethnicities - Pima County (zoomed in Tucson/surrounding area)



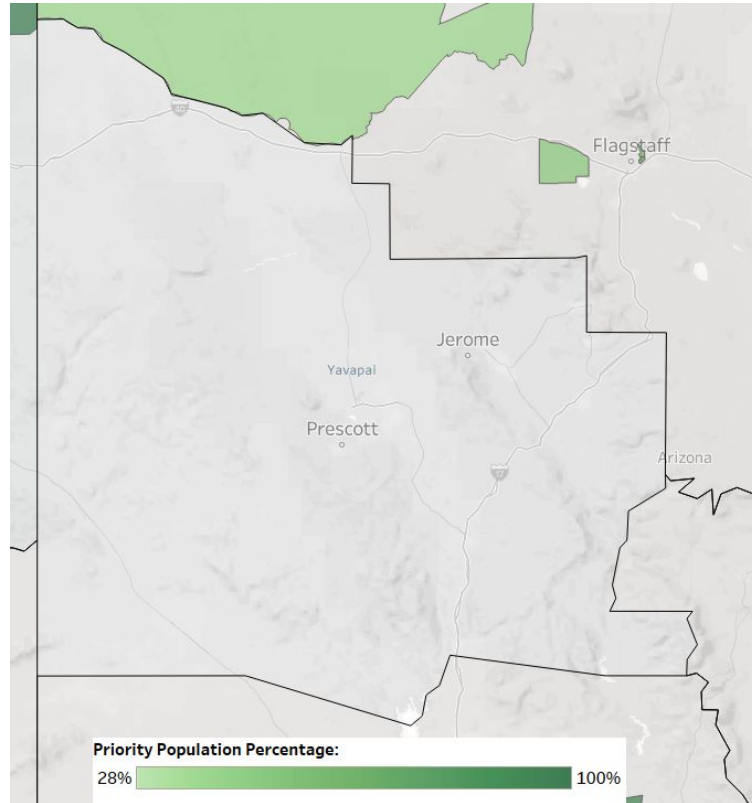
All disproportionately impacted race/ethnicities - Yuma County



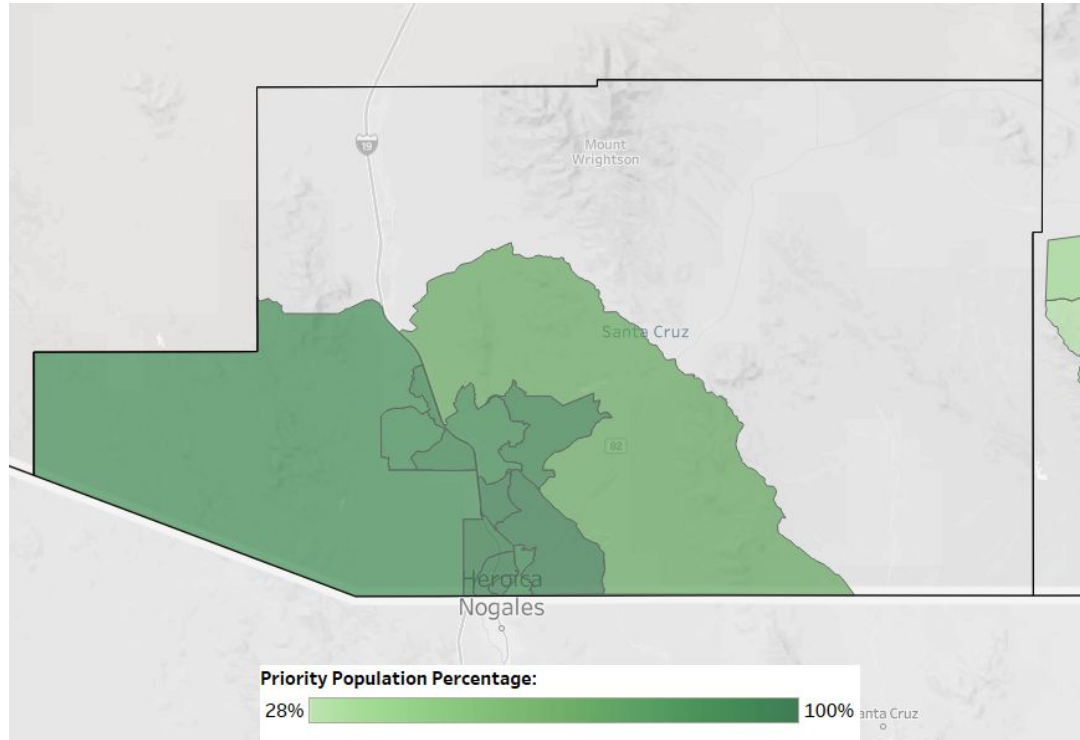
All disproportionately impacted race/ethnicities - Yuma County (zoomed in Yuma/surrounding areas)



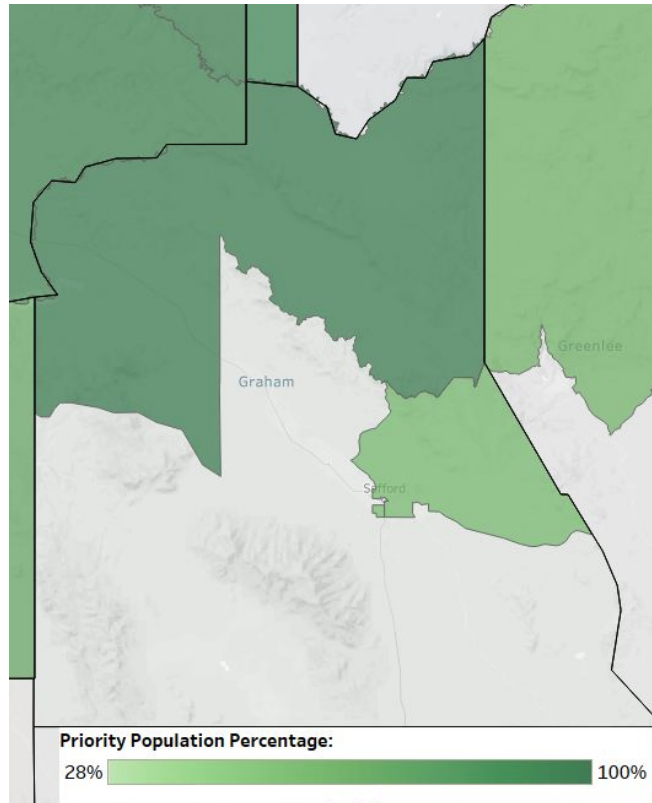
All disproportionately impacted race/ethnicities - Yavapai County



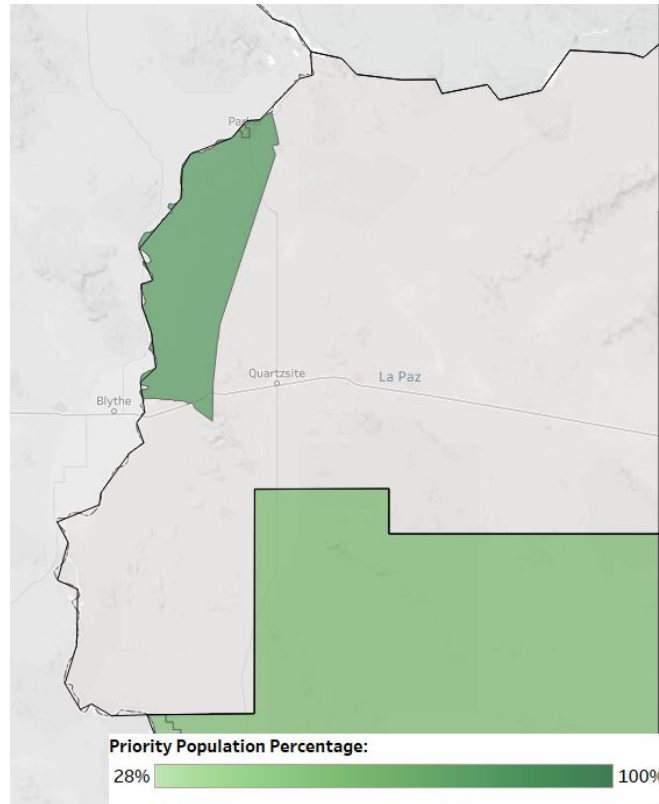
All disproportionately impacted race/ethnicities - Santa Cruz County



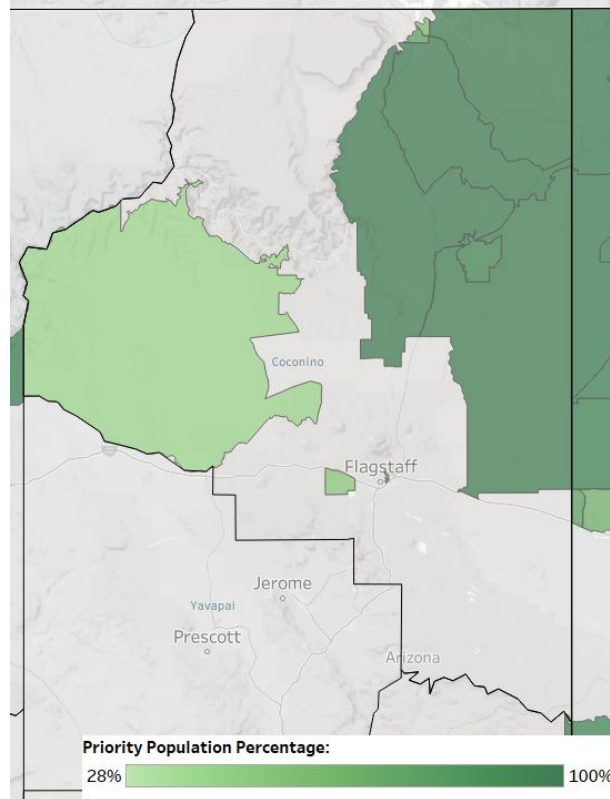
All disproportionately impacted race/ethnicities - Graham County



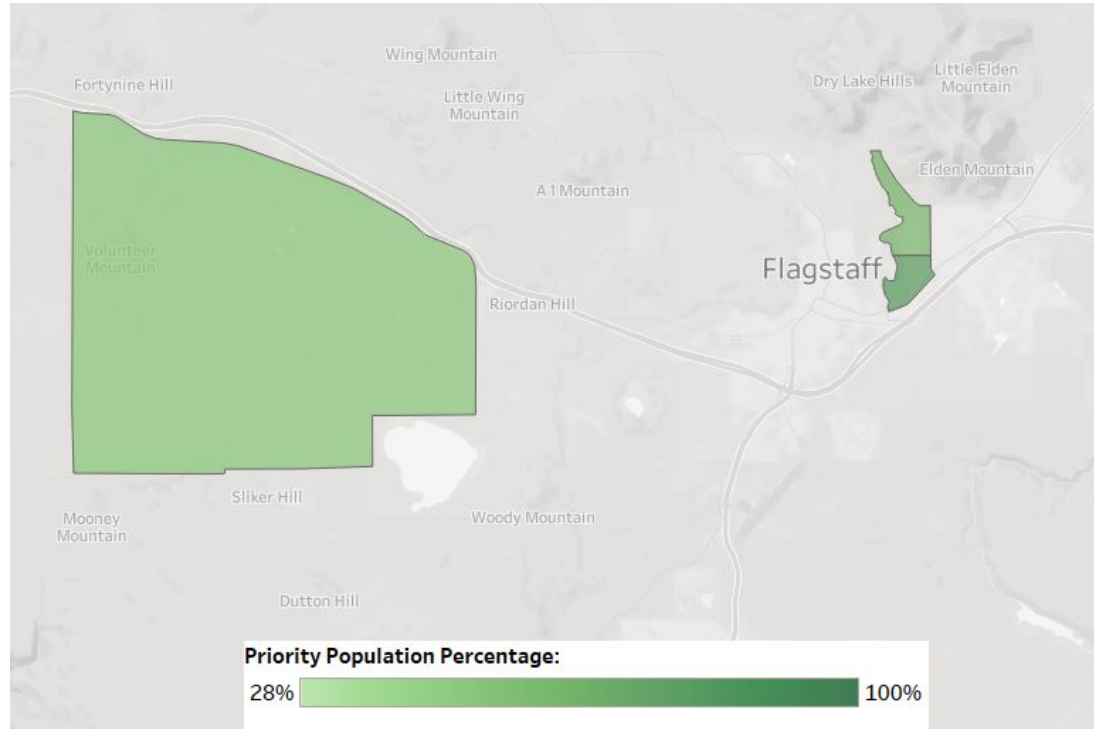
All disproportionately impacted race/ethnicities - La Paz County



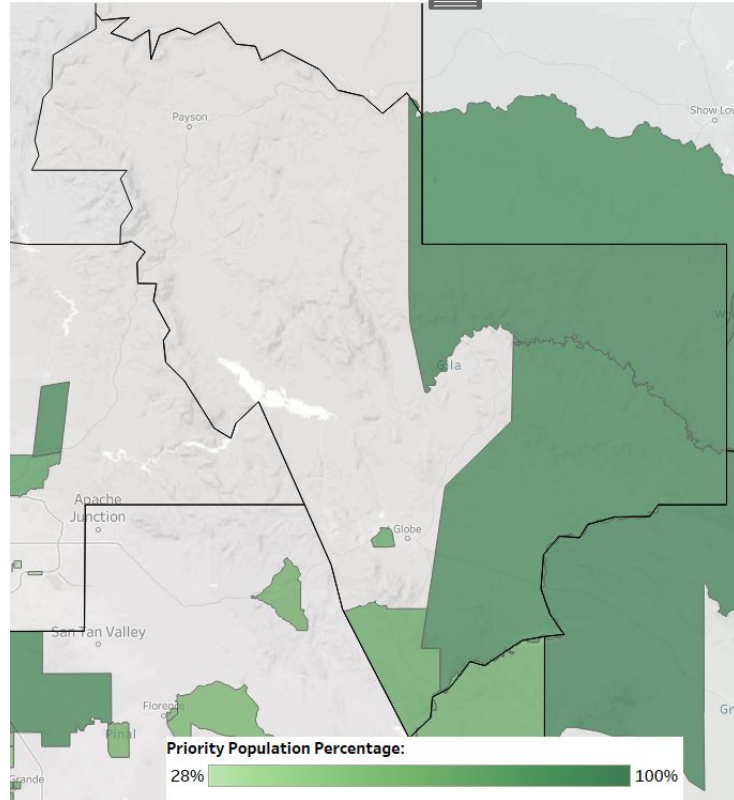
All disproportionately impacted race/ethnicities - Coconino County



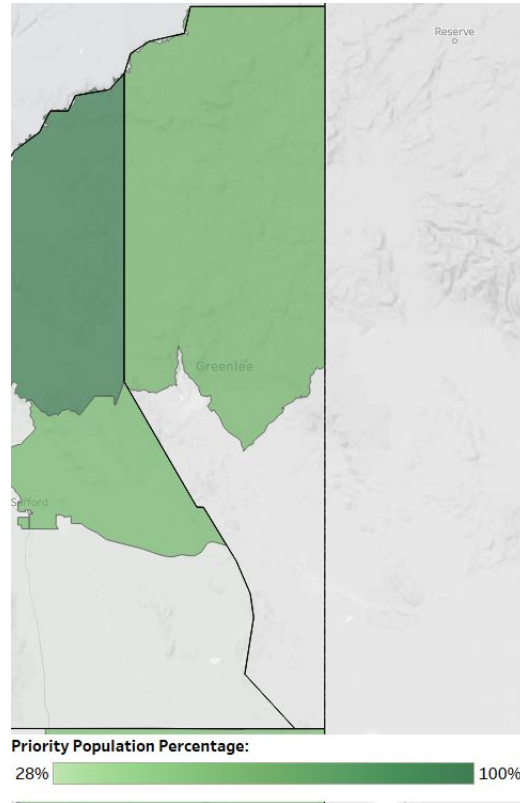
All disproportionately impacted race/ethnicities - Coconino County (zoomed in Flagstaff/surrounding areas)



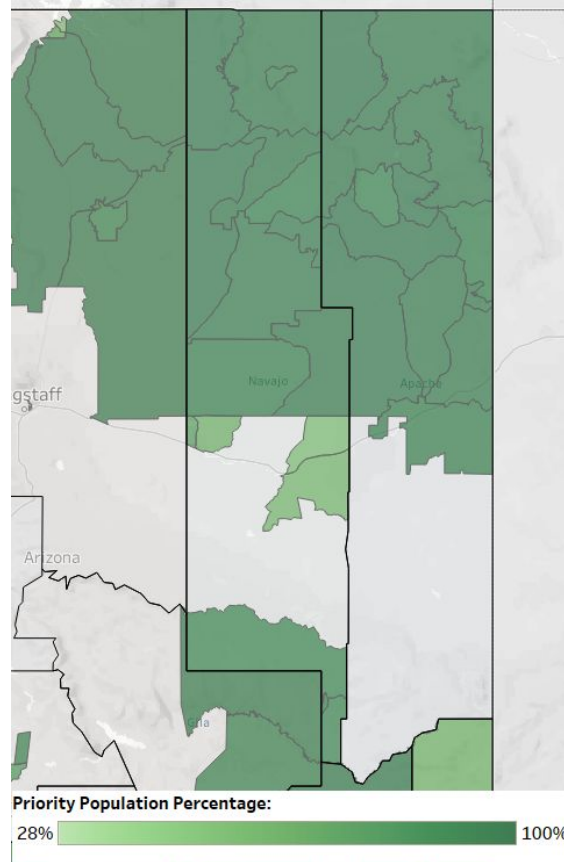
All disproportionately impacted race/ethnicities - Gila County



All disproportionately impacted race/ethnicities - Greenlee County



All disproportionately impacted race/ethnicities - Navajo County



All disproportionately impacted race/ethnicities - Apache County

